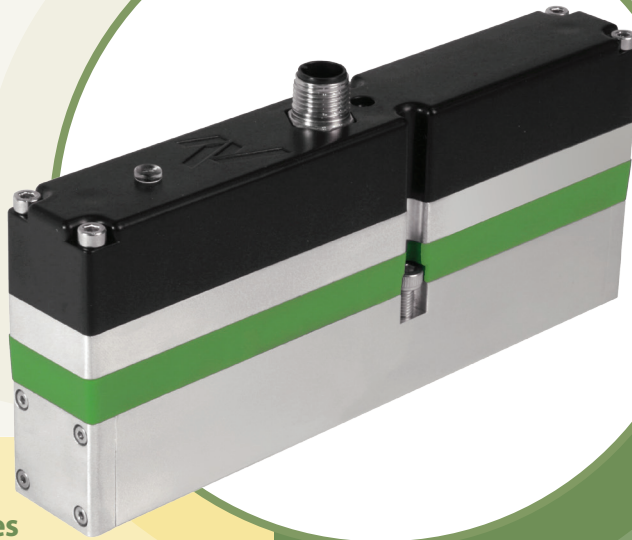
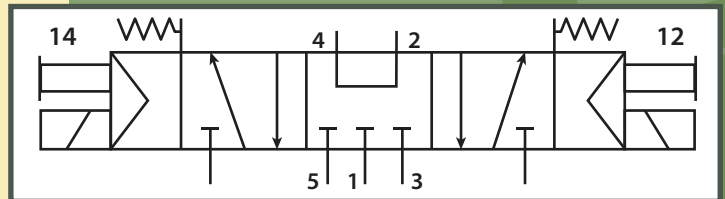


SAVINGS OUT OF THIN AIR



Nexmatix's new energy efficient ISO valves use on average 20-40% less compressed air than conventional directional control valves. The valves perform like conventional valves but use a unique spool configuration and on-board microelectronics to **recycle compressed air**. All valves conform to international standards 15407-1 and 15407-2.

## OUR PROPRIETARY TECHNOLOGY



For the cost-conscious consumer, the Nexmatix GREEN valve is our most economic option.

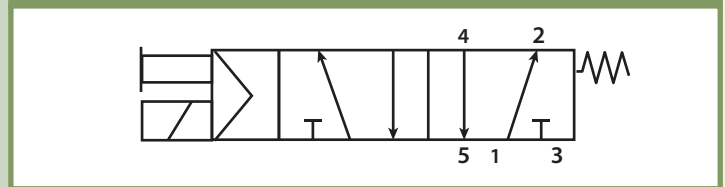
This unique valve provides users with a cost-competitive option for simple two-position actuation applications, while still delivering a significant percentage of the energy savings of our standard product offerings.

	PRELIMINARY	26 mm	
Valve Specifications	Cv (average)	0.8	
	Flow Rate / Capacity	1400 l/min	
	Minimum Operating Pressure	45 (3) psig (bar)	
	Maximum Operating Pressure	115 (8) psig (bar)	
	Minimum External Pilot Pressure	45 (3) psig (bar)	
	Switching On Time	25 ms	
	Switching Off Time	60 ms	
	Maximum Switching Speed	72 <sup>1</sup> cycles/min	
Electrical Specifications	Supply Voltage	24V	
	Power Consumption	Pulse	1.0 W
		Holding	0.5 W
	Current	Pulse (in-rush)	42 mA
		Holding	21 mA
	Allowable Voltage	± 10%	
Other Specifications	Service Life	20M cycles	
	Body Material	Al / ABS	
	Seal Material	Buna-N	
	Height	2.6 (67) <sup>2</sup> in (mm)	
	Length	6.1 (155) in (mm)	
Width	1.0 (25) in (mm)		
Weight	14.3 (405) oz (g)		

<sup>1</sup> Based on standard dwell. Contact Nexmatix if faster switching times are needed.

<sup>2</sup> Standard height for 15407-2 installed, height for 15407-1 is 3.0 (75)

### GREEN



### GREEN Valve Ordering Options

Plug Type	Pilot	Part Number
M12 (15407-1)	Internal	NX-DCV-SM-GRN-1-I-V0-L0-S0-00
M12 (15407-1)	External	NX-DCV-SM-GRN-1-E-V0-L0-S0-00
Manifold (15407-2)	Internal	NX-DCV-SM-GRN-2-I-V0-L0-S0-00
Manifold (15407-2)	External	NX-DCV-SM-GRN-2-E-V0-L0-S0-00